

Simultaneous quantification of ticagrelor and its active metabolite, AR-C124910XX, in human plasma by liquid chromatography-tandem mass spectrometry: Applications in steady-state pharmacokinetics in patients

Soon Uk Chae¹ , Kyoung Lok Min² , Chae Bin Lee¹ , Zhouchi Huang¹ , Min Jung Chang²  and Soo Kyung Bae^{1,*} 

¹College of Pharmacy and Integrated Research Institute of Pharmaceutical Sciences, The Catholic University of Korea, Bucheon 14662, Republic of Korea

²Department of Pharmacy and Yonsei Institute of Pharmaceutical Sciences, College of Pharmacy, Yonsei University, Incheon 21983, Republic of Korea

*Correspondence: S. K. Bae; Tel: +82-2-2164-4054, Fax: +82-2-2164-4096, E-mail: baesk@catholic.ac.kr



Received 18 Jul 2019

Revised 8 Sep 2019

Accepted 16 Sep 2019

Keywords

AR-C124910XX,
Human plasma,
LC-MS/MS,
Ticagrelor,
Validation

pISSN: 2289-0882

eISSN: 2383-5427

A sensitive and simple liquid chromatography-tandem mass spectrometry method was developed and validated for the simultaneous quantification of ticagrelor and its active metabolite, AR-C124910XX from 50 μ L human plasma using tolbutamide as an internal standard as per regulatory guidelines. Analytes in plasma were extracted by simple protein precipitation using acetonitrile, followed by chromatographic separation with an AcclaimTM RSLC 120 C₁₈ column (2.2 μ m, 2.1 \times 100 mm) and a gradient acetonitrile-water mobile phase containing 0.1% formic acid within 8 min. Mass spectrometric detection and quantitation were conducted by selected reaction-monitoring on a negative electrospray ionization mode with the following transitions: m/z 521.11 \rightarrow 361.10, 477.03 \rightarrow 361.10, and 269.00 \rightarrow 169.60 for ticagrelor, AR-C124910XX, and tolbutamide, respectively. The lower limit of quantifications was 0.2 ng/mL with linear ranges of 0.2–2,500 ng/mL ($r^2 \geq 0.9949$) for both analytes. All validation data, including selectivity, cross-talk, precision, accuracy, matrix effect, recovery, dilution integrity, stability, and incurred sample reanalysis, were well within acceptable limits. This assay method was validated using K₂-EDTA as the specific anticoagulant. Also, the anticoagulant effect was tested by lithium heparin, sodium heparin, and K₃-EDTA. No relevant anticoagulant effect was observed. This validated method was effectively used in the determination of ticagrelor and its active metabolite, AR-C124910XX, in plasma samples from patients with myocardial infarction.

Copyright © 2019 Translational and Clinical Pharmacology

© It is identical to the Creative Commons Attribution Non-Commercial License (<http://creativecommons.org/licenses/by-nc/3.0/>).

© This paper meets the requirement of KS X ISO 9706, ISO 9706-1994 and ANSI/NISO Z.39.48-1992 (Permanence of Paper).

Reviewer

This article was reviewed by peer experts who are not TCP editors.

Introduction

Ticagrelor (Fig. 1) is a reversible oral P2Y₁₂ receptor antagonist that exhibits antiplatelet effects by blocking ADP_{1,2}. It is widely used in combination with low-dose aspirin to decrease the risk of myocardial infarction and stroke in patients with acute coronary syndromes at a loading dose of 180 mg, followed by a maintenance dose of 90 mg twice daily.[3-5]

In humans, ticagrelor is rapidly absorbed in the intestine and undergoes extensive metabolism to generate approximately ten different metabolites.[6] Of these, the major active metabolite, AR-C124910XX (Fig. 1) is formed via hepatic CYP3A4/5 enzymes.[7] It is present in the blood at about 30–40% of the concentration of ticagrelor, exhibiting similar antiplatelet activity.[8,9] Therefore, the pharmacodynamic response is dependent on combined exposure to ticagrelor and AR-C124910XX.[10]

To date, several LC-MS/MS methods have been reported for simultaneous determination of ticagrelor and its active metabolite, AR-C124910XX, in human plasma.[11–15] Most protocols included a liquid-liquid extraction[12,15] or protein precipitation with evaporation step[11,13] for plasma preparation, to increase assay sensitivity. The lower limits of quantitation (LLOQ) achieved with these methods ranged from 0.5 to 5 ng/mL using ≥ 100 μ L plasma samples. However, these methods have certain limitations such as time-consuming sample preparation and requirement for large plasma volume, which are undesirable for

the high-throughput bioanalysis. Furthermore, many clinical trials have been conducted to confirm the effects of half-dose ticagrelor (loading dose of 90 mg, followed by a maintenance dose of 45 mg twice daily) compared with the standard-dose (loading dose of 180 mg, maintenance dose of 90 mg twice daily) in East Asian patients.[16–18] Therefore, to be able to measure lower concentrations of ticagrelor following half-dose, estimation methods with increased sensitivity are desirable. More recently, Xu et al. (2019)[14] reported an LC-MS/MS assay utilizing a simple protein precipitation without a concentration process and achieved better sensitivity (LLOQ of 0.781 ng/mL) with less plasma volume (20 μ L), however, had a narrow calibration curve range (0.781–800 ng/mL).

In this study, a simple and sensitive LC-MS/MS method for the simultaneous determination of ticagrelor and its active metabolite, AR-C124910XX, in human plasma was developed and fully validated. Compared to the previously published LC-MS/MS methods, the present method showed excellent performance, offering several advantages such as requirement of small volume of plasma (50 μ L), highly sensitive LLOQ (0.2 ng/mL) with wide calibration ranges (0.2–2,500 ng/mL), and simple protein precipitation protocol. Additionally, anticoagulant effects (K_2 -EDTA, K_3 -EDTA, lithium heparin, or sodium heparin) were assessed to evaluate the feasibility of adapting this technique for routine analysis of patient samples.

Methods

Chemicals and reagents

Ticagrelor and AR-C124910XX were purchased from Toronto Research Chemicals. Tolbutamide (internal standard, IS) and formic acid were procured from Sigma-Aldrich. Acetonitrile and methanol (HPLC grade) were obtained from Burdick & Jackson Company. All chemicals were of the highest quality available. Water used for the LC-MS/MS analysis was prepared using a Milli-Q purification system. K_2 -EDTA, Li-heparin, and Na-heparin human plasma (blank plasma) were obtained from donors at the Severance Hospital of Yonsei University Health System and stored at -80°C prior to using.

Calibration standards and quality controls

Stock solutions of ticagrelor and AR-C124910XX were prepared by dissolving each compound in methanol at a concentration of 2 mg/mL. Thereafter, stock solutions of both analytes were mixed in a volume ratio of 1:1 and diluted with methanol to get the mixed working solutions with the concentration ranges of 0.01–125 μ g/mL for both ticagrelor and AR-C124910XX. Calibration standards were prepared by spiking 1 μ L of an appropriately mixed working solution with 49 μ L drug-free human plasma to yield a series of calibration standards at 0.2, 1, 2.5, 10, 100, 500, and 2500 ng/mL for both ticagrelor and AR-C124910XX.

The QC samples were prepared independently from separated

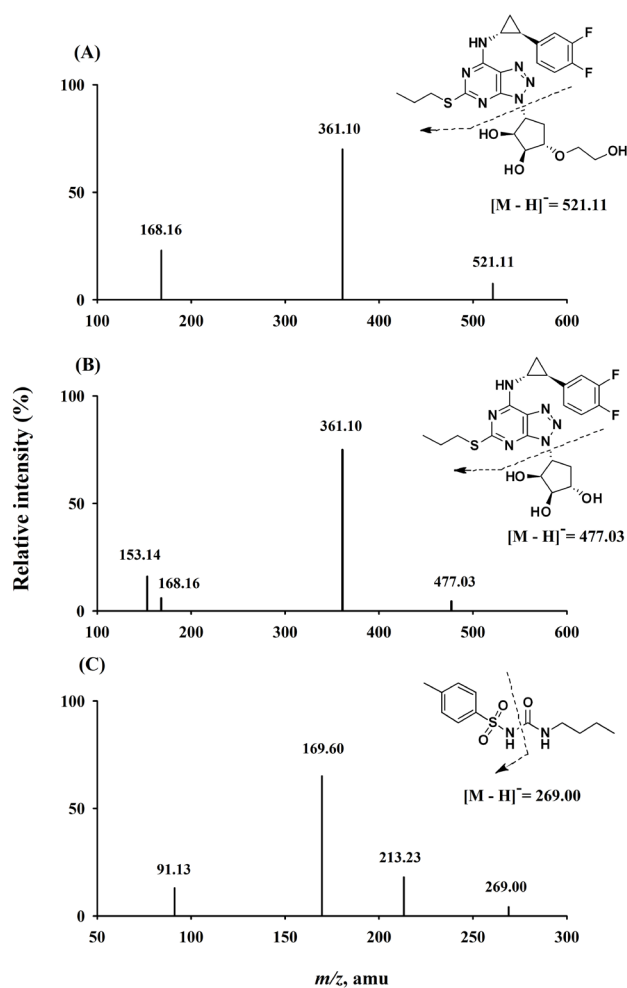


Figure 1. Product ion mass spectra of [M - H]⁻ ions of ticagrelor (A), AR-C124910XX (B), and tolbutamide, IS, (C).

stock solutions following the same procedure as above, at 0.2 ng/mL (lower limit of quantification; LLOQ), 0.5 ng/mL (low QC), 200 ng/mL (medium QC), and 2,000 ng/mL (high QC) for both ticagrelor and AR-C124910X. Tolbutamide (internal standard, IS) was dissolved in acetonitrile at 1 mg/mL and further diluted to 5 ng/mL in acetonitrile for routine use as an IS. All stock and mixed working solutions of ticagrelor, AR-C124910XX, and tolbutamide were stored at -80°C before use.

Sample preparation

A 150 μL aliquot of acetonitrile, containing 5 ng/mL tolbutamide, was added to a 50 μL aliquot of human plasma sample and mixed by vortexing for 10 min. After the mixture was centrifuged at $13,000 \times g$ for 15 min at 4°C , the supernatant was filtered through 13 mm \times 0.2 μm PTFE syringe filter directly into an amber autosampler vial for LC-MS/MS analysis. A 5 μL aliquot was injected into the LC-MS/MS system. All prepared samples were kept in an autosampler at 4°C until injection.

LC-MS/MS conditions

Samples were analyzed using an Agilent 1260 HPLC system (Agilent Technologies, Wilmington, DE, USA) equipped with a QTRAPTM 5500 mass spectrometer (AB SCIEX, Foster City, CA, USA) in electrospray ionization mode. The separation was performed on an AcclaimTM RSLC 120 C₁₈ column (2.2 μm , 2.1 \times 100 mm, Thermo Scientific, Sunnyvale, CA, USA). The mobile phase consisted of acetonitrile (A) and distilled water containing 0.1% formic acid (B), and the flow rate was set to 0.3 mL/min. Run time was set at 8 min with gradient elution: 0.0–0.1 min (30% A), 0.1–0.6 min (30%–70% A), 0.6–6.0 min (70% A), 6.0–6.1 min (70%–30% A), 6.1–8.0 min (30% A). The column and auto-sampler temperatures were maintained at 40°C and 4°C , respectively.

The mass settings were analyte-specific and were auto-optimized by flow injection of 0.2 $\mu\text{g}/\text{mL}$ solution in methanol containing each analyte. The mass spectral data were acquired with the following electrospray ionization under negative mode: the ion spray voltage was set at $-4,500$ eV; source temperature was 650°C ; nitrogen gas was used as the nebulizer gas; collision gas was set to medium; curtain gas, ion source gases, 1 and 2 were 20, 60, and 60 psi, respectively. The optimized declustering potentials, collision energies, entrance potentials, and collision exit potentials were -30 eV, -30 eV, -10 eV, and -9 eV for ticagrelor; -40 eV, -30 eV, -10 eV, and -10 eV for AR-C124910XX; and -55 eV, -26 eV, -10 eV, and -15 eV for IS. For each analyte, two selected reaction-monitoring transitions were monitored, one used for quantification and the other for confirmation as follows: ticagrelor, m/z 521.11 to 361.10 (quantitation) and 168.16 (confirmation); AR-C124910XX, m/z 477.03 to 361.10 (quantitation) and 153.14 (confirmation); and IS m/z 269.00 to 169.60 (quantitation) and 91.13 (confirmation). Data acquisition was performed with dwell times of 150 ms, and quadrupoles Q1 and Q3 were set on a unit resolution. The analytical data were pro-

cessed using the Analyst software (version 1.5.2; AB SCIEX).

LC-MS/MS method validation

The validation parameters were selectivity, linearity, precision, accuracy, dilution integrity, recovery, matrix effects, stability, and incurred sample reanalysis of ticagrelor and AR-C124910XX in human plasma containing K₂-EDTA as an anticoagulant in accordance with the United States Food and Drug Administration (US FDA) guidance for the validation of bioanalytical methods.[19]

Selectivity

Selectivity towards endogenous plasma matrix components was assessed by comparing the chromatograms of 15 different batches of plasma which consisted of 13 healthy control plasma, one each of lipemic and hemolytic human plasma to ensure that no interfering peaks were present at the retention times of ticagrelor (0.2 ng/mL) and AR-C124910XX (0.2 ng/mL) at the LLOQ levels. Crosstalk among MS/MS channels was assessed by directly injecting each compound (ticagrelor, AR-C124910XX, and IS) separately at the highest concentration for the calibration curve (ULOQ; 2,500 ng/mL, each) and monitoring the response in the other MS/MS channels.

Carryover

Carryover was investigated by injecting two double blank plasma samples directly after the injection of a high concentration sample from the calibration curves in an analytical run. The acceptance criteria were that the carryover in the blank sample should not be greater than 20% of LLOQ and 5% for the IS peak area.

Linearity and sensitivity

Calibration curves were prepared by assaying standard human plasma samples of ticagrelor and AR-C124910XX at the concentration ranges of 0.2–2,500 ng/mL. The linearity of each calibration curve was determined by plotting the peak area ratio (y) of ticagrelor and AR-C124910XX to the IS versus the corresponding nominal concentration (x). The calibration model was selected based on the analysis of data by linear regression with weighting factors ($1/x$, $1/x^2$, and none). The LLOQ of the assay was defined as the lowest concentration on the calibration curve at which a signal-to-noise ratio was > 10 , with accuracy within $\pm 20\%$ and a precision $\leq 20\%$.

Accuracy and precision

The intra-day accuracy and precision were determined by analyzing 6 replicates of the LLOQ sample and 3 different QC samples (low QC, medium QC, and high QC) on the same day. The inter-day accuracy and precision were evaluated by analyzing 10 replicates of the LLOQ sample and 3 different QC samples on 5 different days (2 replicates per day). The concentrations of QC samples, including LLOQ samples, were determined from the

standard calibration curve and were analyzed on the same day. The accuracy was calculated in terms of relative error (RE): RE (%) = (detected concentration – theoretical concentration)/theoretical concentration × 100%, and the precision was expressed as relative standard deviation (RSD, %) at each level. The acceptance criterion was that the measured values must be within ± 15% deviation from the normal value except at the LLOQ, for which it was considered to be within ± 20%.

Extraction recovery and matrix effect

Extraction recovery and matrix effect for ticagrelor and AR-C124910XX were investigated using 8 individual blank human plasma, including hyperlipemia and hemolytic plasma, at three QC levels (3 replicates of each QC). Extraction recovery of ticagrelor and AR-C124910XX was determined by comparing the peak area of the extracted sample with the peak area of the post-extracted-spiked plasma. In addition, the same evaluation was performed for the IS. Matrix effect was calculated by the ratio of the peak area in the presence of matrix (post-extracted-spiked plasma) to the peak area in the absence of matrix (non-extracted neat solution).

Dilution integrity

Dilution integrity test was performed to ensure that plasma samples could be diluted with blank plasma without affecting the final concentration. Ticagrelor and AR-C124910XX spiked human plasma samples were prepared at 20,000 ng/mL (8-fold of ULOQ) and diluted with pooled human blank plasma at dilution factors of 10 and 20 in six replicates and analyzed. As part of the validation, the replicates had to comply with both accuracy and precision within ± 15%.

Stability

The stability of ticagrelor and AR-C124910XX in human plasma was assessed at 3 QC levels using 6 replicates under the following conditions: (1) short-term (8 h at room temperature) and long-term (120 days at –80°C) storage, three freeze-thaw cycles, and post-treatment storage (36 h at 4°C). The QC samples for stability testing were processed and quantified against freshly prepared calibration standards along with fresh QC samples. Deviation within ± 15.0% was considered acceptable.

Anticoagulant effect

The anticoagulant effect was tested by analyzing 6 replicates of 3 QC levels spiked in plasma, each containing lithium heparin, sodium heparin, or K₃-EDTA as anticoagulants along with processed calibration curve standards, freshly spiked in plasma containing K₂-EDTA as an anticoagulant. As part of the validation, the replicates had to comply with both accuracy and precision within ± 15%.

Clinical application and incurred sample reanalysis

The validated method was applied to pharmacokinetic sam-

ples from 4 patients with myocardial infarction who received ticagrelor 180 mg loading dose (Day 1) followed by 90 mg twice/day maintenance dose, starting 12 h post-loading dose (ClinicalTrials.gov Identifier: NCT02581280). The Institutional Review Board approved this trial at Severance Hospital (IRB No. 4-2014-0919), Yonsei University Health System (Seoul, South Korea), and all patients gave informed written consent before inclusion in the study.

Blood samples (~2 mL) were collected into K₂-EDTA tubes just before the 12th maintenance dose dosing (0 h) and 1, 2, 3, 6, 8, and 12 h after 180 mg loading dose (Day 1) and 12 maintenance doses of ticagrelor on Day 7. Samples were centrifuged (3,200 × g, 4°C, 10 min) to obtain plasma, which was stored at –80°C until LC-MS/MS analysis.

Incurred sample reanalysis (ISR) was also performed 3 months after the initial analysis to ensure that the assay method was reproducible. In this study, two samples from each patient, one near C_{max} and the other at the elimination phase of ticagrelor, were reanalyzed. The percentage difference between concentrations obtained on the initial analysis and the concentrations observed on reanalysis were calculated, and differences within ± 20% of the mean for at least 67% of the repeats were considered acceptable.[19]

Results and Discussion

LC-MS/MS optimization

In order to optimize electrospray ionization for ticagrelor, AR-C124910XX, and the IS, MS full scans were carried out in both positive and negative ion detection modes. Although all the analytes could be ionized in both positive and negative electrospray modes, the higher response was achieved in the negative mode. Therefore, [M – H][–] ions at *m/z* 521.11 for ticagrelor, 477.03 for AR-C124910XX, and 269.00 for the IS were employed in MS/MS mode to obtain the fragmentation pattern. Detection of ions was performed in selected reaction-monitoring transition mode by monitoring the transition pairs as described in the methods section. The mass parameters were optimized based on the maximal response of the product ions. Figure 1 displays the product ion mass spectra of ticagrelor, AR-C124910XX, and the IS.

Chromatography conditions, including mobile phase compositions and various reverse-phase analytical columns, were evaluated in order to achieve the best separation, peak shape, sensitivity, and retention for ticagrelor and AR-C124910XX while minimizing the total sample running time. Ultimately, AcclaimTM RSLC 120 C₁₈ column (2.1 × 100 mm, 2.2 μm, Thermo Scientific) and a gradient mobile phase containing acetonitrile and distilled water containing 0.1% formic acid were selected as high-intensity signals; symmetric peak shapes, and suitable retention times were observed for ticagrelor, AR-C124910XX, and the IS.

Protein precipitation can simplify the sample preparation procedure and provide excellent reproducibility. In this study, ace-

tonitrile and methanol were tested as precipitants. In addition, the volume ratio of precipitant to plasma (4:1, 3:1, and 2:1) was optimized by varying the proportion of precipitant added. An acetonitrile-plasma volume ratio of 3:1 was found to yield more consistent and higher recoveries and symmetric peak shapes of ticagrelor and AR-C124910XX than methanol without matrix interference. Therefore, acetonitrile was finally chosen as the precipitant for these experiments.

Selection of a suitable IS with appropriate retention time, extraction recovery, and degree of matrix effect as the analyte is an essential factor in the LC-MS/MS analysis. Although a stable isotopically labeled IS is the first choice in the bioanalysis using LC-MS/MS, deuterium-labeled compounds sometimes behave unexpectedly, having variable retention times, different recoveries, or matrix effects as compared with the analytes.[20-22] In addition, for new assays intended to be applied for clinical samples or therapeutic drug monitoring, commonly prescribed drugs or self-medication drugs are avoided in the IS selection

process.[23] Several compounds were investigated for the selection of a suitable IS, and finally, tolbutamide was found to be most appropriate for the present purpose.

LC-MS/MS method validation

Selectivity

There were no interfering peaks from endogenous substances in the 15 different blank human plasma samples at retention times of ticagrelor (6.1 min), AR-C124910XX (5.7 min), and the IS (5.2 min). Moreover, no cross-talk phenomena were observed among the MS/MS channels. Representative chromatograms of double blank plasma, drug-free plasma spiked with the IS, plasma sample at LLOQ (0.2 ng/mL for both ticagrelor and AR-C124910XX), and human plasma collected at 12 h after 180 mg loading dose (Day 1) and 12 maintenance doses of ticagrelor on Day 7 are shown in Figure 2.

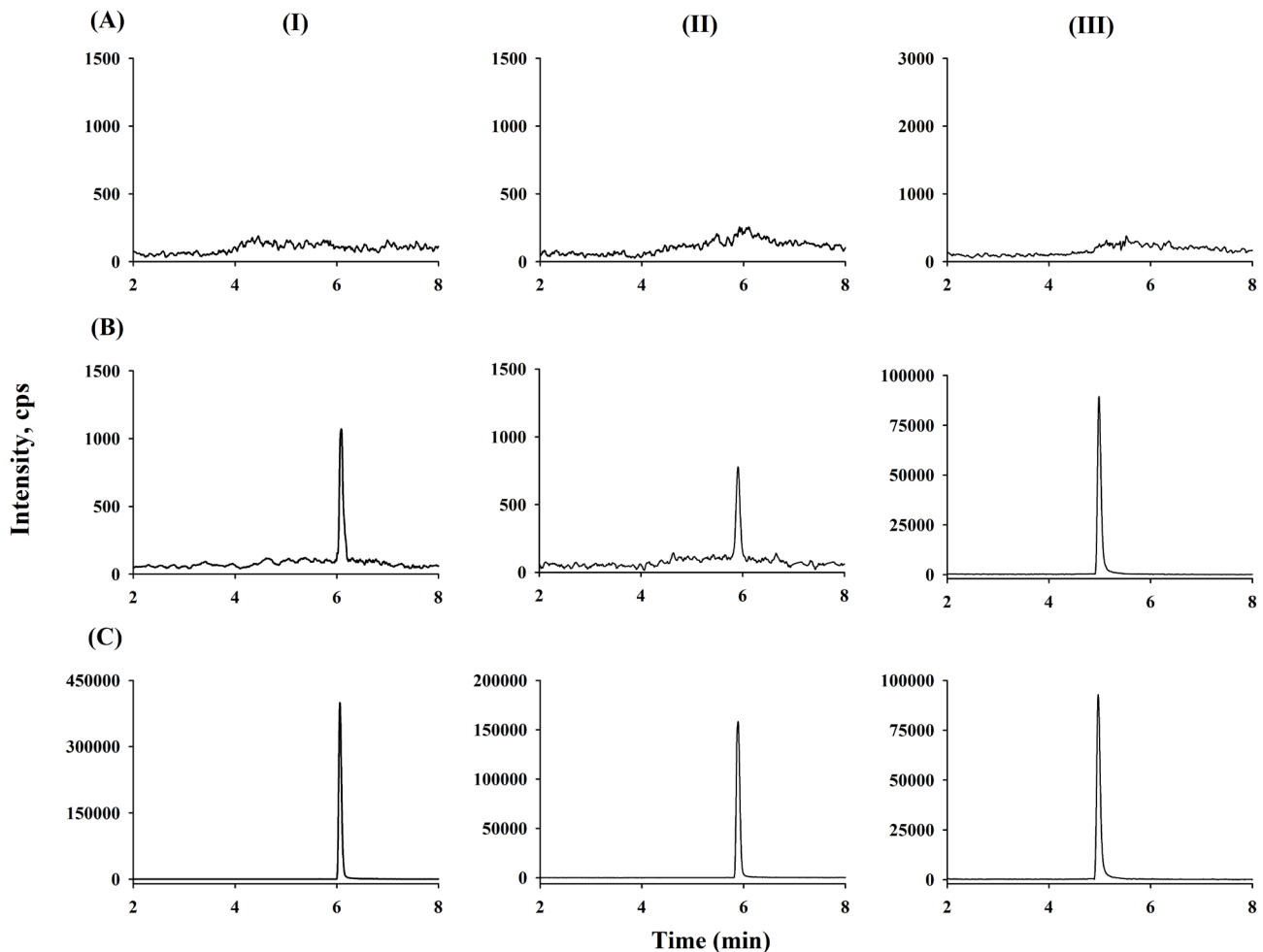


Figure 2. Representative chromatograms of ticagrelor (I), AR-C124910XX (II), and tolbutamide (III): (A) double blank plasma, (B) blank plasma spiked with LLOQ of ticagrelor and AR-C124910XX (0.2 ng/mL, both), (C) a plasma sample collected at 12 h after administration of 12 maintenance doses of ticagrelor on Day 7.

Carryover

Following the injection of a ULOQ sample, peaks of the 2 analytes and the IS from the blank samples were not observed, indicating that carry-over was avoidable in our assay.

Linearity and sensitivity

The concentration-response relationship was fitted with $1/x^2$ weighted regression model to evaluate the linearity of calibration curves for ticagrelor and AR-C124910XX. All 6 calibration curves generated during the validation were linear over the concentration range of 0.2–2,500 ng/mL for both compounds with correlation coefficient (r^2) ≥ 0.9956 . The typical equations were $y = (0.02983 \pm 0.001970)x + (0.000171 \pm 0.000121)$ for ticagrelor and $y = (0.03655 \pm 0.001787)x + (0.00413 \pm 0.0005534)$ for AR-C124910XX. The back-calculated results for all ticagrelor and AR-C124910XX calibration standards were $\leq 8.00\%$ RSD and -7.60 to 7.97% RE, and $\leq 7.23\%$ RSD and -0.783 to 6.10% RE, respectively.

The LLOQ (0.2 ng/mL) of both analytes were sufficient to allow pharmacokinetic studies of ticagrelor and AR-C124910XX at steady-state in humans with signal-to-noise (S/N) ratio ≥ 10 .

Accuracy and precision

Accuracy and precision of the analysis of QC samples at 4 con-

centration levels for each analyte are presented in Table 1. The intra-day accuracy (RE, %) and precision (RDS, %) were -4.87 to 1.75% and $\leq 7.75\%$ respectively for ticagrelor, and -3.22 to 4.67% and $\leq 9.86\%$ respectively for AR-C124910XX. The inter-day accuracy and precision were -2.18 to 7.68% and $\leq 5.67\%$ respectively for ticagrelor, and -4.43 to 0.0700% and $\leq 5.76\%$ respectively for AR-C124910XX. All accuracy results were within $\pm 15\%$ of the nominal value, all precision results were $\leq 15\%$, and therefore, this developed method is accurate and precise.

Extraction recovery and matrix effect

The detailed results of extraction recoveries and matrix effects are shown in Table 2. The mean extraction recovery of ticagrelor was within the range of 99.2% – 105% , whereas the extraction recovery of AR-C124910XX was within 102% – 105% . The extraction recovery of IS was $106 \pm 2.34\%$. No significant matrix effect was observed in all the eight batches of human plasma, including hyperlipidemic and hemolyzed plasma. The matrix effects ranged from 102 to 110% for both analytes. Similarly, the corresponding value of the IS was $103 \pm 1.88\%$. This result suggested that ion suppression or enhancement from the plasma matrix was negligible under the current conditions. With a low matrix effect and consistent and efficient recovery, this assay has proved to be reliable for bioanalysis.

Table 1. Intra- and inter-day accuracy and precision of QC samples for ticagrelor and AR-C124910XX in human plasma

Compounds	Added (ng/mL)	Intra-day (n = 6)			Inter-day (n = 10)		
		Mean \pm SD (ng/mL)	Accuracy (RE, %)	Precision (RSD, %)	Mean \pm SD (ng/mL)	Accuracy (RE, %)	Precision (RSD, %)
Ticagrelor	0.2	0.192 \pm 0.0135	-3.83	7.02	0.210 \pm 0.0119	4.86	5.67
	0.5	0.509 \pm 0.0395	1.75	7.75	0.502 \pm 0.0247	0.370	4.92
	200	198 \pm 4.31	-1.10	2.18	217 \pm 7.51	7.68	3.47
	2,000	1,900 \pm 79.9	-4.87	4.21	1,960 \pm 102	-2.18	5.21
AR-C124910XX	0.2	0.199 \pm 0.0196	-0.717	9.86	0.200 \pm 0.0103	0.0100	5.15
	0.5	0.489 \pm 0.0384	-2.17	7.85	0.478 \pm 0.0249	-4.43	5.20
	200	209 \pm 8.40	4.67	4.02	200 \pm 11.5	0.0700	5.76
	2,000	1,940 \pm 80.9	-3.22	4.18	1,920 \pm 102	-4.18	5.33

Table 2. Extraction recoveries and matrix effects for ticagrelor, AR-C124910XX, and tolbutamide in human plasma

Compounds	Added (ng/mL)	Extraction recovery		Matrix effect	
		Mean \pm SD (%)	RSD (%)	Mean \pm SD (%)	RSD (%)
Ticagrelor	0.5	99.2 \pm 4.43	4.47	110 \pm 3.12	2.84
	200	105 \pm 6.36	6.04	109 \pm 2.88	2.64
	2,000	105 \pm 2.35	2.24	104 \pm 3.98	3.84
AR-C124910XX	0.5	102 \pm 5.71	5.60	102 \pm 7.03	6.80
	200	105 \pm 4.19	4.01	105 \pm 4.83	4.61
	2,000	105 \pm 3.34	3.18	103 \pm 2.80	2.72
Tolbutamide	5	106 \pm 2.34	2.20	103 \pm 1.88	1.83

Dilution integrity

The dilution integrity was confirmed for QC samples of ticagrelor and AR-C124910XX that exceeded the ULOQ (up to 20,000 ng/mL). The results revealed that the precision and accuracy for 1:10 and 1:20 diluted test samples were within the acceptable limits of $\pm 15\%$ for precision and 85.0–115.0% for accuracy (data not shown). These results suggest that plasma samples with concentrations above ULOQ can be determined by appropriate dilution.

Stability

The stability tests were designed to simulate the anticipated conditions of handling real samples. Both ticagrelor and AR-C124910XX were found to be stable in human plasma as well as in the processed samples, under the tested storage conditions (Table 3). All results were within 15% of the initial values, showing sufficient stability for sample analysis and storage.

The stock solutions for ticagrelor and AR-C124910XX stored at room temperature for 8 h and at -80°C for 120 days, were observed to remain stable.

Anticoagulant effect

This method was validated using K_2 -EDTA as the specific anticoagulant, and also, the anticoagulant effect was tested with lithium heparin, sodium heparin, or K_3 -EDTA. The intra-batch accuracy (RE, %) and precision (RDS, %) in plasma with lithium heparin were 2.02 to 7.56% and $\leq 7.32\%$ respectively for ticagrelor, and -3.87 to 8.80% and $\leq 7.72\%$ respectively for AR-C124910XX. In plasma with sodium heparin, the intra-batch accuracy and precision were -3.67 to 6.17% and $\leq 7.78\%$ respectively for ticagrelor, and -6.25 to 5.01% and $\leq 9.83\%$ respectively for AR-C124910XX. Similarly, in human plasma with K_3 -EDTA, the accuracy and precision were -8.27 to 7.17% and $\leq 10.6\%$ respectively for ticagrelor, and -4.97 to 8.33% and $\leq 5.52\%$ respectively for AR-C124910XX. These results demonstrated the absence of an anticoagulant effect. Therefore, it was concluded that any of the four anticoagulants (K_2 -EDTA, K_3 -EDTA, lithium heparin, or sodium heparin) could be used during pharmacokinetic sample collection.

Clinical application and incurred sample reanalysis

This validated method was effectively used in the determination of ticagrelor and its active metabolite, AR-C124910XX in plasma samples from 4 patients with myocardial infarction, at steady-state of ticagrelor. The mean plasma concentration-time profiles for ticagrelor and AR-C124910XX in 4 patients after 180 mg ticagrelor loading dose (Day 1) followed by 90 mg ticagrelor twice daily maintenance dose (Day 7), are shown in Figure 3. The sensitivity and specificity of the method using only 50 μL of plasma were sufficient for characterizing the pharmacokinetics of ticagrelor and AR-C124910XX. During maintenance therapy of ticagrelor in patients with myocardial infarction, the mean C_{max} values of ticagrelor and AR-C124910XX were 823 ± 315 ng/mL and 228 ± 92.2 ng/mL respectively, occurring at T_{max} (both, 2 h). The plasma profiles of ticagrelor and AR-

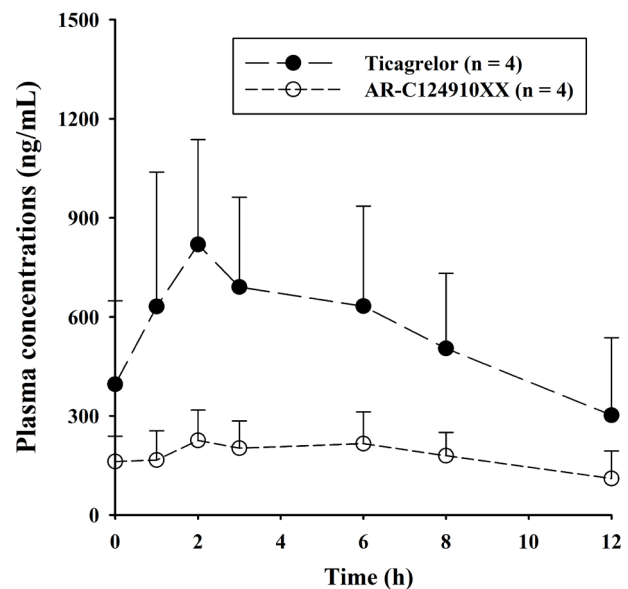


Figure 3. Mean plasma concentration-time profiles for ticagrelor (●) and AR-C124910XX (○) of four patients with myocardial infarction after oral administration of ticagrelor 180 mg loading dose (Day 1) followed by 90 mg twice/day maintenance dose on Day 7. Vertical bars represent standard deviation.

Table 3. Stability of ticagrelor and AR-C124910XX in human plasma under various conditions (n = 6)

Compound	Added (ng/mL)	Short-term (8 h at room temperature)		Post-treatment (36 h at 4°C)		Freeze-thaw (Three cycles)		Long-term (120 days at -80°C)	
		RSD (%)	RE (%)	RSD (%)	RE (%)	RSD (%)	RE (%)	RSD (%)	RE (%)
Ticagrelor	0.5	4.41	-5.85	5.61	-5.15	2.31	4.67	3.17	6.83
	200	7.10	-1.68	3.71	-5.78	3.55	4.77	2.34	7.39
	2,000	6.77	-0.200	5.39	-1.09	7.25	3.13	1.30	4.78
AR-C124910XX	0.5	1.86	6.67	5.38	-1.27	3.12	7.11	2.53	5.83
	200	1.24	8.00	6.23	-2.57	1.50	7.61	3.88	3.76
	2,000	2.90	7.67	4.67	-1.73	1.78	2.17	3.21	5.78

Table 4. Incurred sample reanalysis data of ticagrelor and AR-C124910XX from 4 patients

Patient No.	Time (h)	Ticagrelor			AR-C124910XX		
		Initial conc. (ng/mL)	Re-assay conc. (ng/mL)	Difference ^a (%)	Initial conc. (ng/mL)	Re-assay conc. (ng/mL)	Difference (%)
1	2	1,290	1,190	8.06	330	309	6.57
1	12	634	608	4.19	229	239	-4.27
2	2	613	648	-5.55	206	221	-7.03
2	12	260	262	-0.766	160	155	3.17
3	2	730	753	-3.10	111	104	6.51
3	12	234	242	-3.36	82.9	88.7	-6.76
4	2	645	626	2.99	256	247	3.58
4	12	80.5	82.9	-2.94	34.3	31.9	7.25

^aDifference is expressed as [(initial conc. – re-assay conc.)/mean] × 100.

C124910XX were similar to those reported in the literature. [3,17]

Two plasma samples (one at C_{max} , and the other at elimination phase, 12 h) from each subject were reanalyzed and the difference in concentration between ISR and initial values of the same subject samples were all within the acceptance criteria of ISR (\pm 20% deviation) (Table 4), authenticating the good reproducibility and ruggedness of the present method.

Conclusion

A simple and sensitive LC-MS/MS method for the simultaneous determination of ticagrelor and its active metabolite, AR-C124910XX, in human plasma was developed and validated. Compared to the previously published LC-MS/MS methods, the present method showed excellent performance, offering several advantages, as follows: requirement of small volume of plasma for analysis (50 μ L), highly sensitive LLOQ (0.2 ng/mL), wide calibration range (0.2–2500 ng/mL), and simple protein precipitation protocol. Additionally, the absence of anticoagulant effect of commonly employed anticoagulants (K_2 -EDTA, K_3 -EDTA, lithium heparin, or sodium heparin) further supports the feasibility of adapting this method for routine analysis of patient samples.

Acknowledgments

This research was supported by the Basic Research Laboratory (BRL) Program (2015R1A4A1042350) and the Basic Science Research Program (2017R1A2B4008761) through the National Research Foundation of Korea funded by the Korean government.

Conflict of interest

- Authors: Nothing to declare
- Reviewers: Nothing to declare
- Editors: Nothing to declare

References

1. Husted S, van Giezen JJ. Ticagrelor: the first reversibly binding oral P2Y12 receptor antagonist. *Cardiovasc Ther* 2009;27:259-274. doi: 10.1111/j.1755-5922.2009.00096.x.
2. Springthorpe B, Bailey A, Barton P, Birkinshaw TN, Bonnert RV, Brown RC, et al. From ATP to AZD6140: the discovery of an orally active reversible P2Y12 receptor antagonist for the prevention of thrombosis. *Bioorg Med Chem Lett* 2007;17:6013-6018. doi: 10.1016/j.bmcl.2007.07.057.
3. Li P, Gu Y, Yang Y, Chen L, Liu J, Gao L, et al. Low-dose ticagrelor yields an antiplatelet efficacy similar to that of standard-dose ticagrelor in healthy subjects: an open-label randomized controlled trial. *Sci Rep* 2016;6:31838. doi: 10.1038/srep31838.
4. Orme RC, Parker WAE, Thomas MR, Judge HM, Baster K, Sumaya W, et al. Study of two dose regimens of ticagrelor compared with clopidogrel in patients undergoing percutaneous coronary intervention for stable coronary artery disease (STEEL-PCI). *Circulation* 2018 [In Press] doi: 10.1161/CIRCULATIONAHA.118.034790.
5. Xu Q, Sun Y, Zhang Y, Liu B, Fang L, Shen C, et al. Effect of a 180 mg ticagrelor loading dose on myocardial necrosis in patients undergoing elective percutaneous coronary intervention: A preliminary study. *Cardiol J* 2017;24:15-24. doi: 10.5603/CJ.a2017.0002.
6. Teng R, Oliver S, Hayes MA, Butler K. Absorption, distribution, metabolism, and excretion of ticagrelor in healthy subjects. *Drug Metab Dispos* 2010;38:1514-1521. doi: 10.1124/dmd.110.032250.
7. Zhou D, Andersson TB, Grimm SW. In vitro evaluation of potential drug-drug interactions with ticagrelor: cytochrome P450 reaction phenotyping, inhibition, induction, and differential kinetics. *Drug Metab Dispos* 2011;39:703-710. doi: 10.1124/dmd.110.037143.
8. Husted S, Emanuelsson H, Heptinstall S, Sandset PM, Wickens M, Peters G. Pharmacodynamics, pharmacokinetics, and safety of the oral reversible P2Y12 antagonist AZD6140 with aspirin in patients with atherosclerosis: A double-blind comparison to clopidogrel with aspirin. *Eur Heart J* 2006;27:1038-1047. doi: 10.1093/eurheartj/ehi754.
9. Teng R, Butler K. Pharmacokinetics, pharmacodynamics, tolerability and safety of single ascending doses of ticagrelor, a reversibly binding oral P2Y12 receptor antagonist, in healthy subjects. *Eur J Clin Pharmacol* 2010;66:487-496. doi: 10.1007/s00228-009-0778-5.
10. Sillén H, Cook M, Davis P. Determination of unbound ticagrelor and its active metabolite (AR-C124910XX) in human plasma by equilibrium dialysis and LC-MS/MS. *J Chromatogr B Analyt Technol Biomed Life Sci* 2011;879:2315-2322. doi: 10.1016/j.jchromb.2011.06.023.
11. Danielak D, Gorzycka P, Kruszyna Ł, Karaźniewicz-Łada M, Główką F. Development of an LC-MS/MS method for simultaneous determination of ticagrelor and its active metabolite during concomitant treatment with atorvastatin. *J Chromatogr B Analyt Technol Biomed Life Sci* 2019;1105:113-119. doi: 10.1016/j.jchromb.2018.12.018.
12. Peng J, Wang Y, Li M, He C, Chen Y, Chen X, et al. An HPLC-MS/MS method for the quantitative determination of ticagrelor and its active me-

- tabolite AR-C124910XX in human plasma and its application to a clinical study. *Curr Pharma Anal* 2017;13:296-303. DOI : 10.2174/1573412912666160518151458
13. Sillén H, Cook M, Davis P. Determination of ticagrelor and two metabolites in plasma samples by liquid chromatography and mass spectrometry. *J Chromatogr B Analyt Technol Biomed Life Sci* 2010;878:2299-2306. doi: 10.1016/j.jchromb.2010.06.018.
 14. Xu X, Ding X, Yuan B, Li W, Wang Y, Jin Y, et al. Validated liquid chromatography-tandem mass spectrometry method for quantification of ticagrelor and its active metabolite in human plasma. *Biomed Chromatogr* 2019;33:e4498. doi: 10.1002/bmc.4498.
 15. Zhong W, Wang X, Tang L, Mai L, Chen XP, He G, et al. Simultaneous determination of ticagrelor and its metabolites in human plasma and urine using liquid chromatography-tandem mass spectrometry. *J Anal Toxicol* 2016;40:445-453. doi: 10.1093/jat/bkw039.
 16. Lee YJ, Kim H, Choi J, Lee BH, Lee SY. Evaluation of pharmacokinetic, pharmacodynamic, efficacy, and safety data of low-dose ticagrelor versus standard dose in East Asians: A systematic review. *Ther Clin Risk Manag* 2018;14:83-93. doi: 10.2147/TCRM.S152276.
 17. Li H, Guo J, Carlson GF, Teng R. Pharmacodynamics, pharmacokinetics, and safety of ticagrelor in Chinese patients with stable coronary artery disease. *Br J Clin Pharmacol* 2016;82:352-361. doi: 10.1111/bcp.12950.
 18. Park DW, Lee PH, Jang S, Lim HS, Kang DY, Lee CH, et al. Effect of low-dose versus standard-dose ticagrelor and clopidogrel on platelet inhibition in acute coronary syndromes. *J Am Coll Cardiol* 2018;71:1594-1595. doi: 10.1016/j.jacc.
 19. Guidance for Industry-Bioanalytical method validation (2013) US Food and Drug Administration. Rockville, MD, USA. <https://www.fda.gov/files/drugs/published/Bioanalytical-Method-Validation-Guidance-for-Industry.pdf>. Accessed 8 May 2019
 20. Liang HR, Foltz RL, Meng M, Bennett P. Ionization enhancement in atmospheric pressure chemical ionization and suppression in electrospray ionization between target drugs and stable-isotope-labeled internal standards in quantitative liquid chromatography/tandem mass spectrometry. *Rapid Commun Mass Spectrom* 2003;17:2815-2821. doi: 10.1002/rcm.1268.
 21. Remane D, Wissenbach DK, Meyer MR, Maurer HH. Systematic investigation of ion suppression and enhancement effects of fourteen stable-isotope-labeled internal standards by their native analogues using atmospheric-pressure chemical ionization and electrospray ionization and the relevance for multi-analyte liquid chromatographic/mass spectrometric procedures. *Rapid Commun Mass Spectrom* 2010;24:859-867. doi: 10.1002/rcm.4459.
 22. Wang S, Cyronak M, Yang E. Does a stable isotopically labeled internal standard always correct analyte response? A matrix effect study on a LC/MS/MS method for the determination of carvedilol enantiomers in human plasma. *J Pharm Biomed Anal* 2007;43:701-707. doi: 10.1016/j.jpba.2006.08.010.
 23. Srinivas NR. Should commonly prescribed drugs be avoided as internal standard choices in new assays for clinical samples?. *Bioanalysis* 2016;8:607-610. doi: 10.4155/bio.16.21.